



**Gold Lion INDUSTRIES**



**An ISO 9001:2015  
CERTIFIED COMPANY**

**FOUNDATION  
WITH  
TRUST**

**We are Manufacturer & Suppliers of  
Steel Tube/ ERW  
Pipe, Fittings & Slotted Pipes.**



**S.Swarn Singh    S.Simran Singh**  
**+91 9412244607   +91 9411660111**







# GOLD LION INDUSTRIES

## ABOUT US

Gold Lion Industries is a prominent and reliable supplier and manufacturer from an Uttar Pradesh based enterprise. We offer an exclusive range of industrial products to our valuable clients. Established in 2005, we offer customized industrial products to satisfy the needs of our International and Domestic market demands. Our Industrial products are widely appreciated and demanded amongst various sectors for their top-notch quality, durability and performance. Our company has gathered a reputed customer- base because of the Expertise in Business direction and innovative ideas of Jeeshan Singh (Simrab)

We offer premium quality industrial products that include Tubewell Accessories, MS Pipe Fittings, MS Slotted Pipes, Steel Tubes and MS ERW Pipes at Market competitive rates to our existing customers. Our industrial products are manufactured by using top grade raw materials and emphasis on products quality for maximum value addition. Our Industrial products are available in varying grades, types, materials and sizes to cater to the diverse needs of our clients.

GOLD LION INDUSTRIES is also Manufacturing Unit of Brick Bhatta Accessories specialized in Parts of Bricks Machine, Clay Mixing Machine, Id Fan, Coal Crusher, Feed Pot, Ground Leveler, etc. What's that all mean? Throughout our history, we've succeeded by providing a wide range of Manufacturing of all equipment related to Kiln (Bhatta) & Satisfaction to our clients and delivering a whole lot of quality work.

Gold Lion Industries began in many years ago with little more than ability and enthusiasm to his name. Yet even at the start, he had a clear vision of what he wanted: a company with a core of skilled professionals that could consistently deliver high-quality installation at a competitive price.

Gold Lion Industries is Established in 2005, we offer customized industrial products to satis the needs of our domestic market demand across the nation. Our industrial products are widely appreciated and demanded amongst various sectors for their top-notch quality, durability, and performance







## Product Quality

We offer premium quality Industrial products that include Tubewell Accessories, MS Pipe Fitting, MS Slotted Pipes, Steel Tubes and MS ERW Pipe at Market competitive rates to our existing customers. Our Industrial products are manufactured by using top grade raw materials and emphasis on product quality for maximum value addition. Our Industrial products are available in varying grades, types, materials, and sizes to cater to the diverse needs of our clients.



## Our USP

With the aid of skilful and trained experts, we have created top-notch Industrial products that are high in demand across the various business sector. Our products are cost-effective, well designed, and high performing. Our company provides the best price on bulk and urgent purchase of our high-quality industrial product. We also accept all type of payments like cash transactions, online payment transfers, etc for ease of doing business.



## OUR PRODUCTS



### PIPE & FITTINGS FOR BOREWELL & TUBEWELL ACCESSORIES

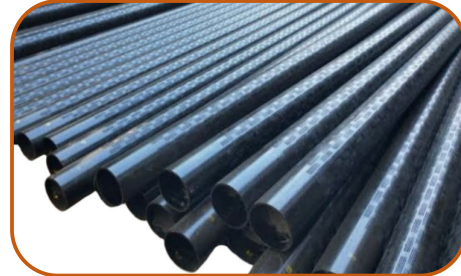
#### 1- MS Slotted Pipe: -

Material	:	Mild Steel
Type	:	Steel Tube Slotted Pipe
Size	:	150mm, 200mm, 300mm, 350mm, all Size
Shape	:	Round
Feature / Finishing	:	Excellent Quality, Fine Finishing, High Strength, Polished



#### 2- Steel Tube/ Mild Steel Tube/ ERW Pipe: -

Material	:	Mild Steel ERW Casing Pipes
Type	:	Steel Tube
Size	:	100mm, 150mm, 200mm, 250mm, 300mm, 350mm
Shape	:	Round
Feature / Finishing	:	Excellent Quality, Fine Finishing, High Strength, Polished
Color	:	Silver



#### 3- MS Coloumn Pipes: -

Material	:	Mild Steel
Type	:	Pipe & Pipe Fitting
Size	:	100mm, 150mm, 200mm, 300mm
Shape	:	Round
Feature / Finishing	:	Durable, High Strength, Long Life, Polished





## OUR PRODUCTS



### 4- MS Bail Plug: -

Material	:	Mild Steel
Type	:	Pipe & Pipe Fitting
Size	:	150mm, 200mm, 300mm
Color	:	Yellow & Black



### 5- MS Reducer: -

Material	:	Mild Steel
Type	:	Pipe & Pipe Fitting
Size	:	150 x 200mm, 200 x 300mm, 150 x 300mm
Color	:	Yellow & Black



### 6- MS Well cap: -

Material	:	Mild Steel
Type	:	Pipe & Pipe Fitting
Size	:	150mm, 200mm, 300mm
Color	:	Yellow & Black



## OUR PRODUCTS

Gold Lion INDUSTRIES



### 7- MS Clamp: -

Material	:	Mild Steel
Type	:	Pipe & Pipe Fitting
Size	:	32mm, 65mm, 100mm, 150mm, 200mm, 300mm, 350mm
Color	:	Yellow & Black



### 8- MS Ring/ MS Socket: -

Material	:	Mild Steel
Type	:	Pipe & Pipe Fitting
Size	:	150mm, 200mm, 300mm, 350mm
Color	:	Yellow & Black



### 9- Threading: -

Material	:	Threading Work
Type	:	MS Steel Tube & MS Round Threading
Size	:	All Size
Feature / Finishing	:	Long Life, Polished





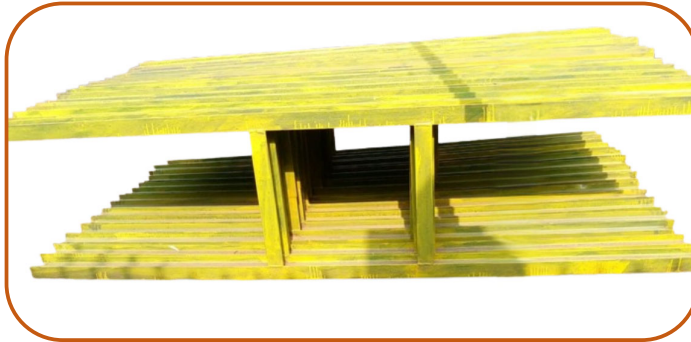
## OUR PRODUCTS

Gold Lion INDUSTRIES



### 10- MS Tubewell Assembly Supporter: -

Material	:	Mild Steel
Type	:	Pipe & Pipe Fitting
Size	:	150mm, 200mm, 300mm, 350mm
Color	:	Yellow & Black



### 11- MS Center Guide: -

Material	:	Mild Steel
Type	:	Pipe & Pipe Fitting
Size	:	150mm, 200mm, 300mm, 350mm
Color	:	Yellow & Black



### 12- Manufacturing & Threading of Kelly of Drilling Machine :-

Material	:	
Type	:	EN Grade
Size	:	150mm, 200mm, 300mm
Feature / Finishing	:	Long Life, Polished



## OUR PRODUCTS



### 13- MS Compresure Header: -

Material	:	Mild Steel
Type	:	Pipe & Pipe Fitting
Size	:	200mm x 300mm
Color	:	Yellow & Black



### 14- MS Send Pump Rope Lifting Machine for Borewell (MS Charkha): -

Material	:	Mild Steel
Type	:	Pipe & Pipe Fitting
Color	:	Yellow



### 15- Borewell Cap: -

Material	:	Mild Steel
Type	:	Pipe & Pipe Fitting
Feature / Finishing	:	Polished





## OUR PRODUCTS



### 16- MS Double Clamp: -

Material	:	Mild Steel
Type	:	Pipe & Pipe Fitting
Size	:	400 x 100mm, 400 x 125mm, 400 x 150mm, 400 x 125mm, 400 x 250mm
Color	:	Yellow



17- :-

## OUR PRODUCTS

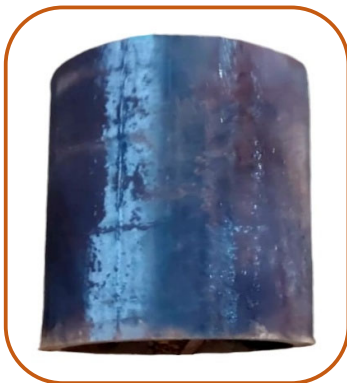
Gold Lion INDUSTRIES



### BRICK- KILN (BRICK FURNACE ACCESSORIES)

#### 1- Feed Pot Kiln Brick: -

Material	:	Mild Steel
Type	:	Steel Tube
Size	:	150mm or 6-inch Dia, 200mm or 8-inch Dia,
Shape	:	Round
Feature / Finishing	:	Excellent Quality, Fine Finishing, High Strength, Polished



#### 2- Feed Pot Kiln Brick: -

Material	:	Cast Iron
Size	:	150mm or 6-inch Dia, 200mm or 8-inch Dia,
Feature / Finishing	:	Excellent Quality, Fine Finishing, High Strength, Polished





## OUR PRODUCTS



### 3- Tava: -

Material	:	Mild Steel
Size	:	100mm, 150mm, 200mm, 250mm, 300mm, 350mm
Feature / Finishing	:	Excellent Quality, Fine Finishing, High Strength, Polished



### 4- Gear Box Coupling: -

Material	:	Mild Steel, Carbon Steel
Type/ Shape	:	Flanged Type with MS Round
Size	:	90 x 140mm,
Feature / Finishing	:	Excellent Quality, Fine Finishing, High Strength, Polished



## OUR PRODUCTS



### 5- Gear Box Flange: -

Material : Mild Steel, Cast Iron  
Feature / Finishing : Excellent Quality, Fine Finishing, High Strength, Polished



### 6- Channel Box: -

Material : Mild Steel  
Feature / Finishing : Excellent Quality, Fine Finishing, High Strength, Polished





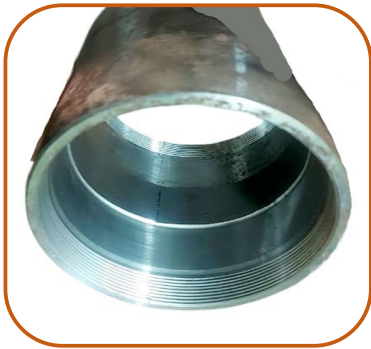
## OUR PRODUCTS



### 7- Harrow Hub: -

Material : Mild Steel

Feature / Finishing : Excellent Quality, Fine Finishing, High Strength, Polished



### 8- Rotavator Hub: -

Material : Mild Steel

Feature / Finishing : Excellent Quality, Fine Finishing, High Strength, Polished





## Our Clients



JINDAL PIPES LIMITED



Gold Lion INDUSTRIES



### THANK YOU

Get in Touch with Us!

CONTACT NUMBER:

S. SWARN SINGH +91 9412244607, +91 9105444607.

S. SIMRAN SINGH +91 9411660111, +91 9639886984.

EMAIL ID: [goldlionindustries@gmail.com](mailto:goldlionindustries@gmail.com)

Website: [www.goldlionindistries.com](http://www.goldlionindistries.com)

ADDRESS: MORADABAD ROAD, CHANDAUSI, 244412 UTTAR PRADESH, INDIA



Facebook



Website



You Tube



Flip Book

Satnam Shri Waheguru Sahib Ji WAHEGURU JI KA KHALSA WAHEGURU JI KI FATEH JI